



RIGS ON LOCATION

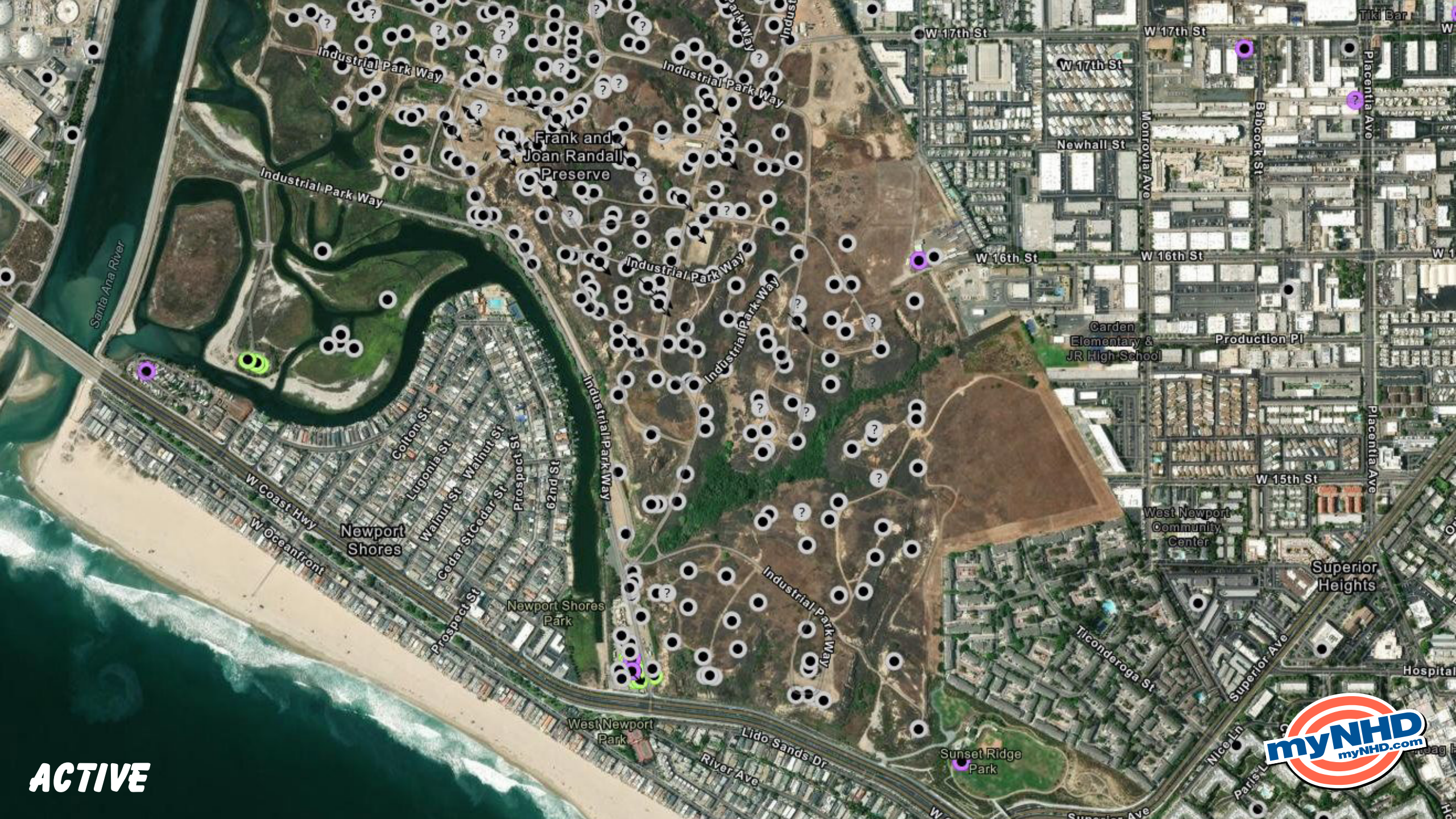
Workers stand near a drill rig at the end of 36th Street in Newport Beach earlier this month. The remediation project is facing delays. (Don [unclear] photographer)



RIGS ON LOCATION







ACTIVE



ACTIVE

k Way

15

16

13





Newport Shores Park

60th St

W Coast Hwy

Industrial Park Way

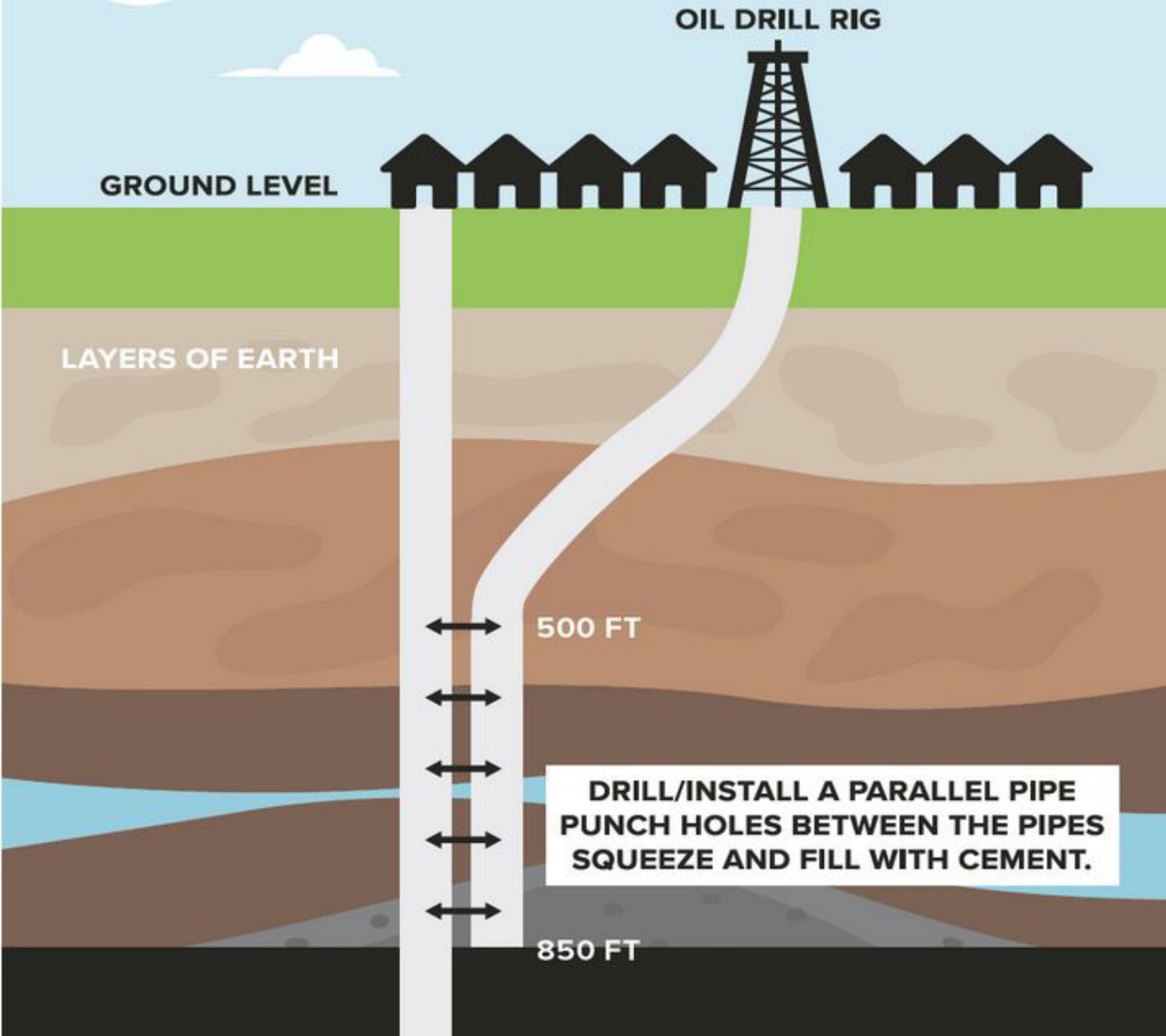
Industrial Park Way

ACTIVE





REVISED OPERATIONAL PLAN | DEC 20, 2025
DRILL PARALLEL "TWIN" OIL PIPE

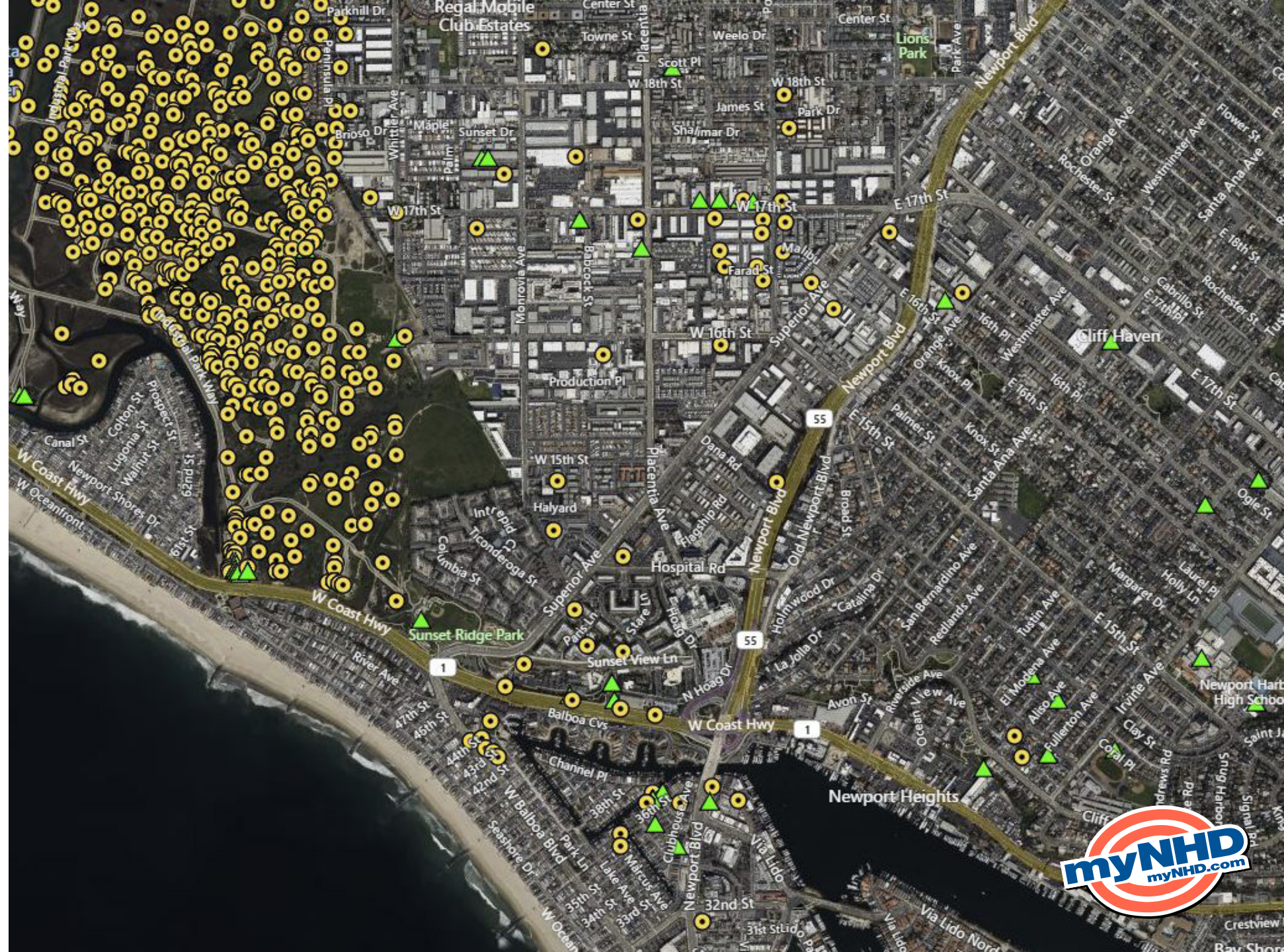


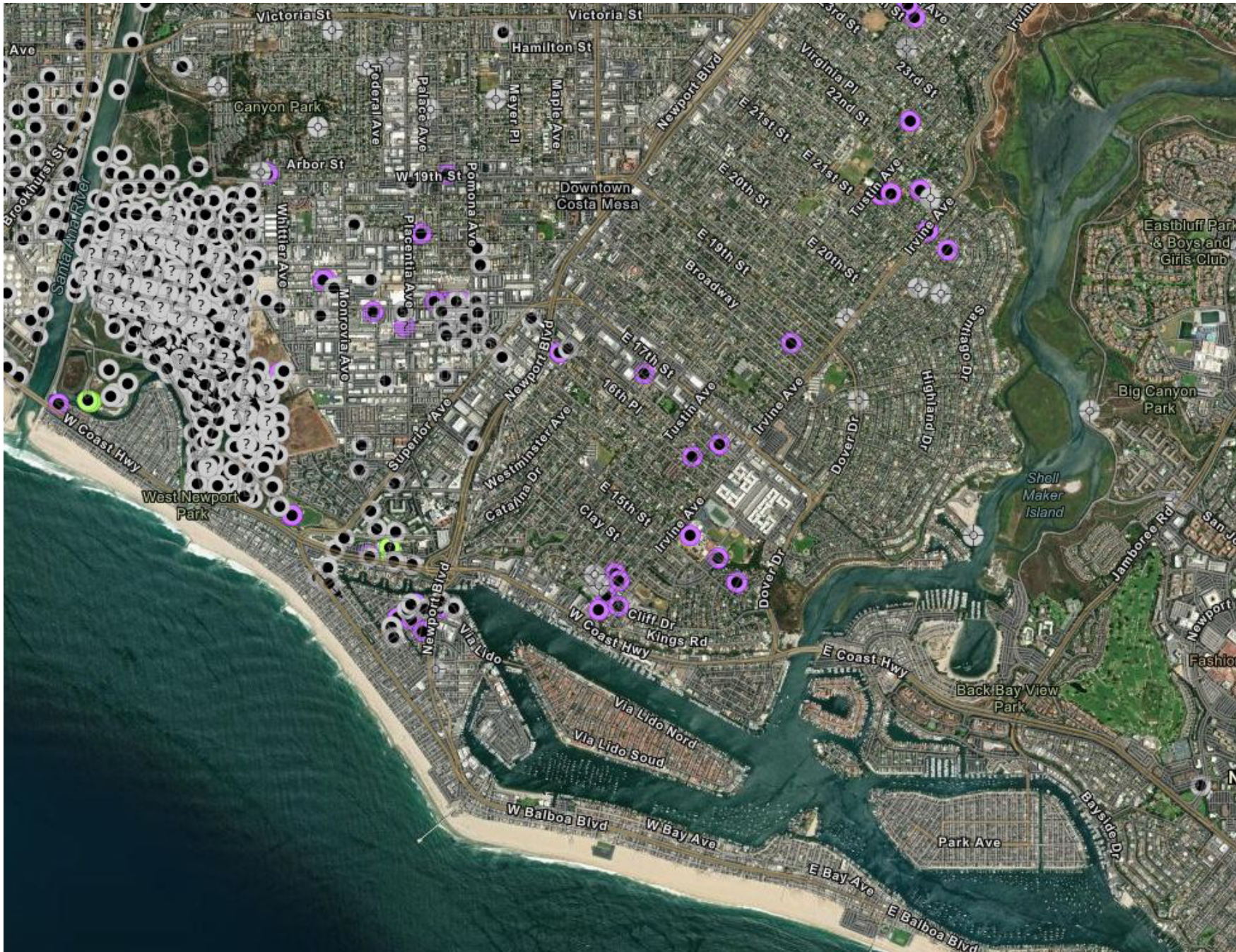
***CITY OF NEWPORT
REVISED OPERATIONAL PLAN***

DEC 20, 2025



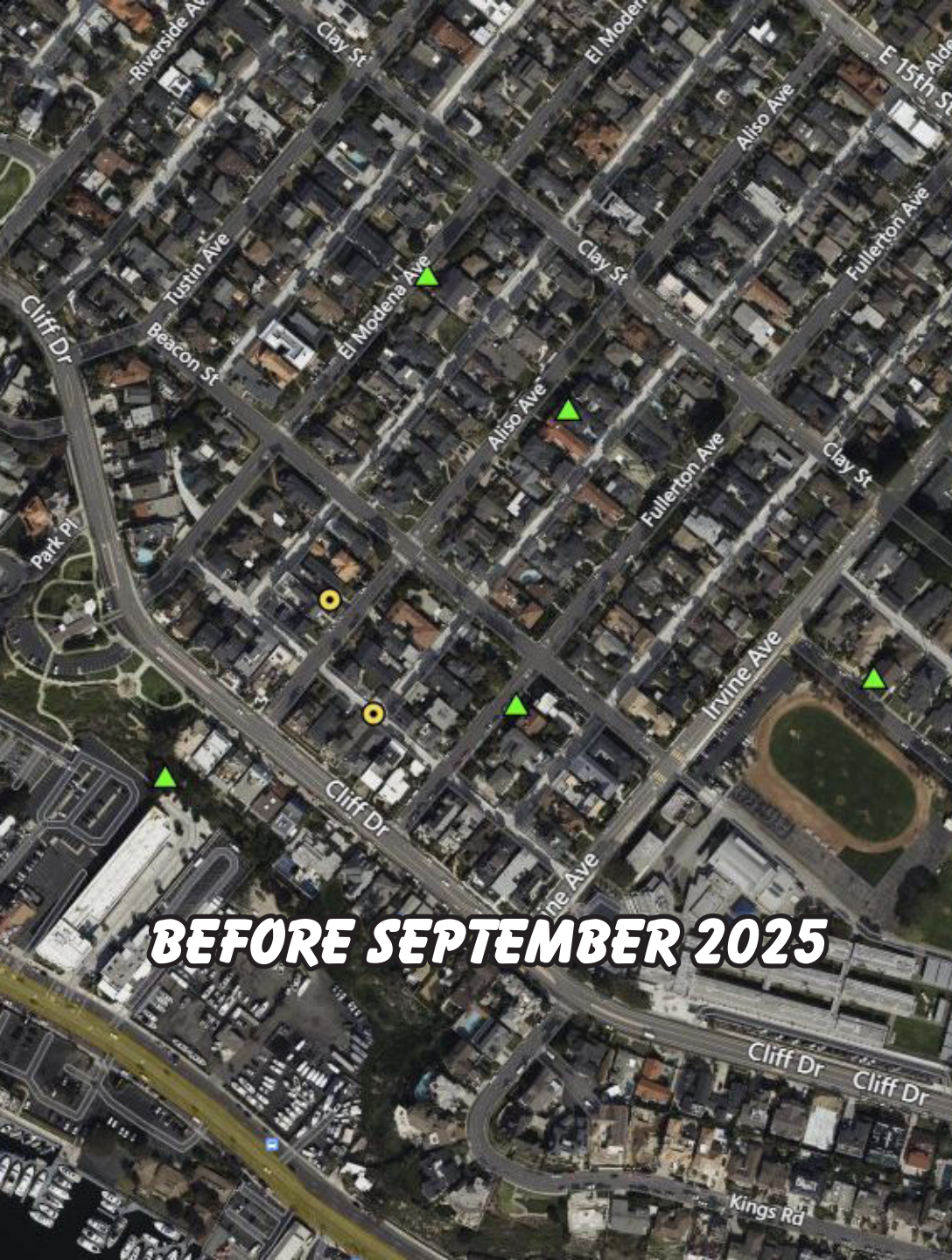
NEWPORT BEACH



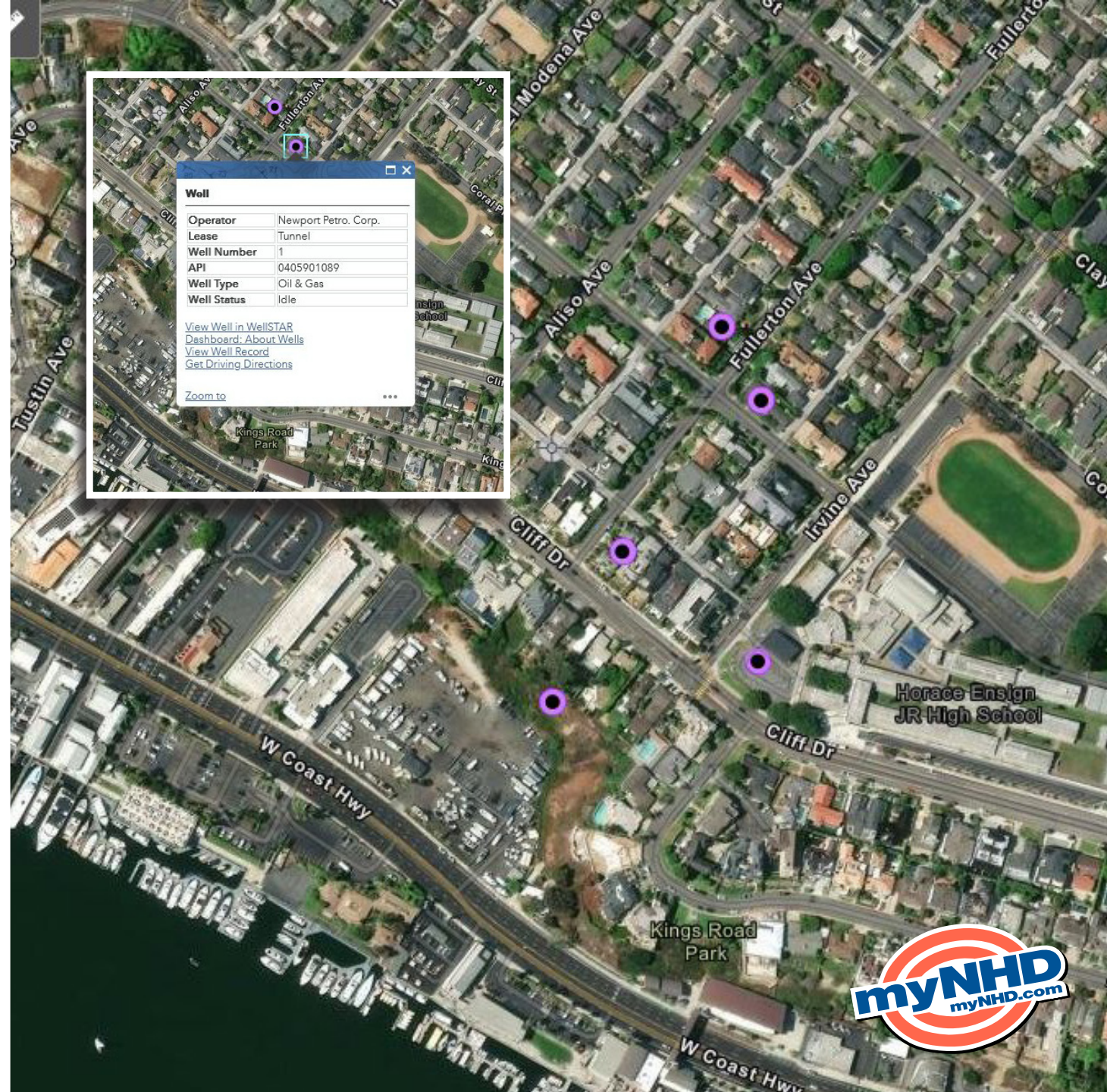


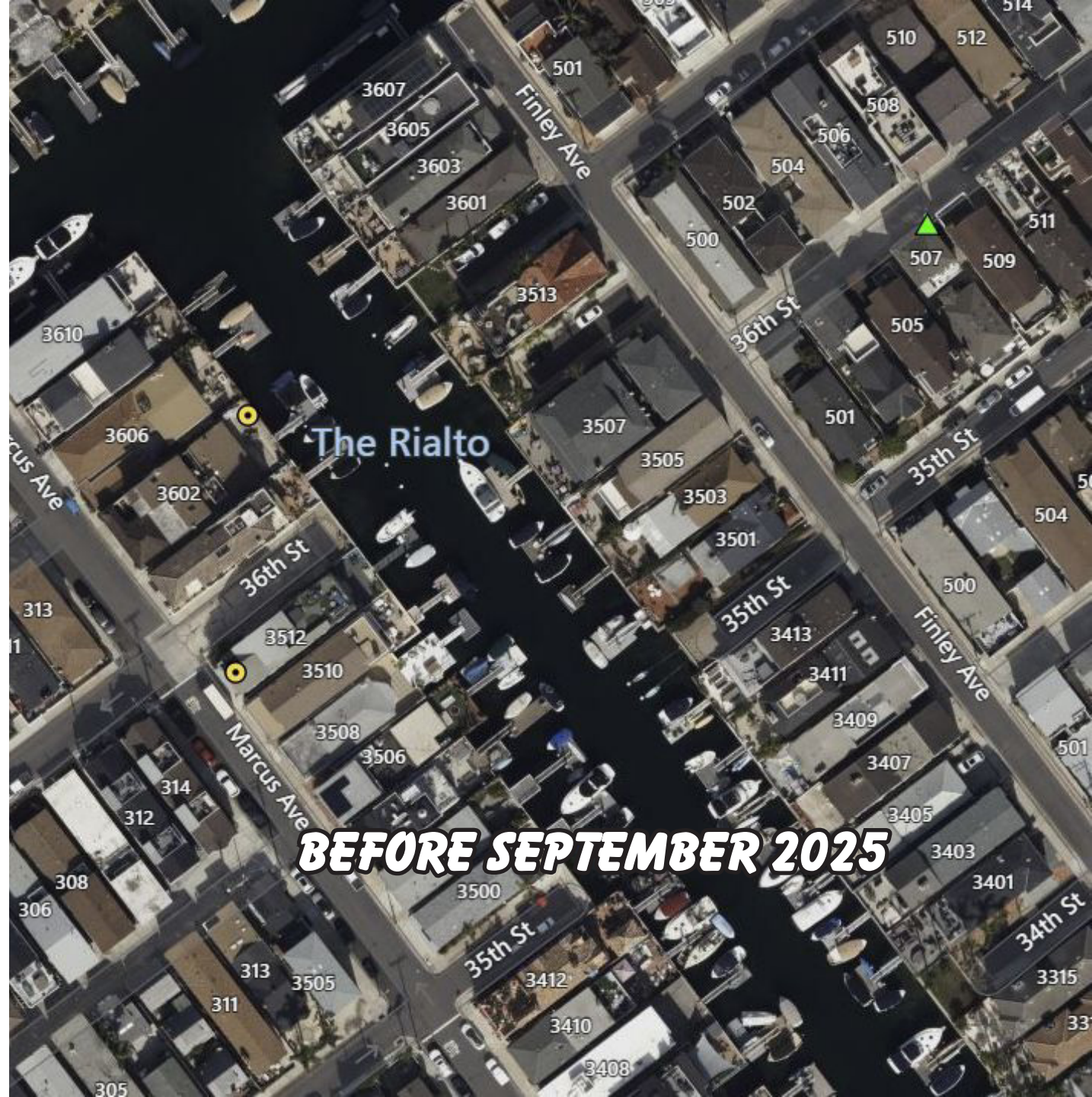
NEWPORT BEACH GREATER AREA





BEFORE SEPTEMBER 2025



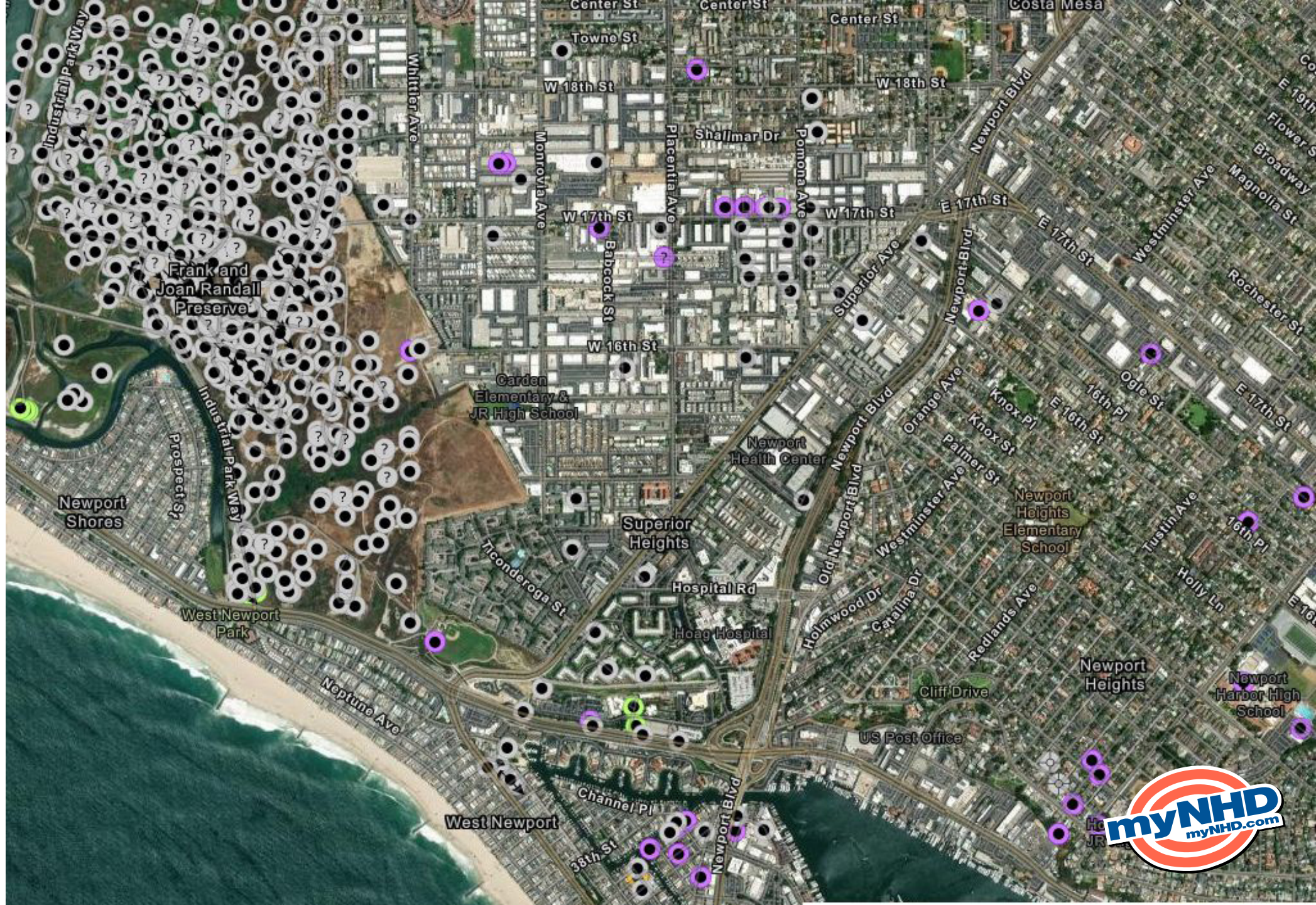




Workers stand near a drill rig at the end of 36th Street in Newport Beach earlier this month. The remediation project is facing delays. (Don Leach / Staff Photographer)



NEWPORT BEACH WELL FINDER



Los Angeles, Cal. November 19, 1929

Mr. William Rice,

121

Santa Ana, Cal.

Agent for SIGNAL SUPPLY Company

DEAR SIR:

(corrected)
12-13-29
S.H.

Operations at your well No. ^{LOUIS F. DEKAY & SON} 2 Section 28, T. 6-S, R. 10-W, S. B. B. & M.,

Newport Oil Field, in Orange County, were witnessed by

V. Austin, representative of the supervisor,

on November 13, 1929. There was also present H. L. Rivera, Foreman, and

W. Rice, Driller

Casing Record Total Depth 860'; 12 1/2" cem. 782'; 10" liner 640'-860' all perf.

The operations were performed for the purpose of testing the location and hardness of a cement plug proposed to be placed from 40' to 20' in the process of abandonment.

and the data and conclusions are as follows:

MR. RIVERS REPORTED THE FOLLOWING:

1. A 7'x12 1/2" wooden plug was driven down to 120'.
2. 10 sacks of sand was dumped on the plug.
3. On November 12, 1929, dumped 15 sacks of Santa Cruz cement on plug.
4. The top of the set cement was not located.

THE INSPECTOR NOTED THAT the plug was located at 89'.

THE LOCATION AND HARDNESS OF THE CEMENT PLUG AT 89' ARE APPROVED.

**SAMPLE DATA
DISCOVERY**

Dear Sir:

I am advised by the Newport Petroleum Corporation that its well No. "Tunnel" 1, Sec. 27, T. 6 S., R. 11 W., S.B.B. & M., Newport field, is being sunk at a different location from that given in the notice and as recorded in our report No. P-1-9646.

The correct location of the tunnel is 600 feet north of well No. 1.

Kindly make the necessary corrections in your copies of records of the well.

Yours truly,

C. C. Thomas
HOD

CCT-ES

Deputy Supervisor

cc Mr. R. D. Bush
Huntington Beach

**SAMPLE DATA
DISCOVERY**

*Phone
Ed Ewin P.*

Los Angeles,
January 8, 1925

cc needed for 97

Mr. R. D. Bush,
State Oil and Gas Supervisor,
Ferry Building,
San Francisco, California.

Dear Sir:

I am advised by the Newport Petroleum Corporation that its well No. "Tunnel" 1, Sec. 27, T. 6 S., R. 11 W., S.B.B. & M., Newport field, is being sunk at a different location from that given in the notice and as recorded in our report No. P-1-9646.

The correct location of the tunnel is 600 feet north of well No. 1.

Kindly make the necessary corrections in your copies of records of the well.

Yours truly,

C. C. Thomas
HOD

CCT-ES

Deputy Supervisor

cc Mr. R. D. Bush
Huntington Beach

*cc
#1 - Jan 12/25*

Tunnel 1 10/24/24

Corrections Made as Follows	By Whom
Weekly Summaries	
121	
Elev. and Loc. Cards	
Production Reports	
Well Records	
Fielders	
Reports	
Peg Models	
Graphics	
Field Maps	

BoP